

BOILER-M8[®]

B-RATED

EEL ≤ 0.23

Boiler-m8 Universal Circulator Pump Head Installation & Operating Manual



WARNING

Prior to installation, please read these installation and operating instructions carefully. The product warranty requires the installation and commissioning of Boiler-m8 circulating pumps to be carried out by a qualified installer in compliance with BS 7593:2019 and all local building regulations and accepted codes of practice in force at the time of installation.

Failure to follow the correct installation or use of the product for any purpose outside of the manufacturers intended design will invalidate the product warranty.

Contents

1. General Information	2
2. Application	2
2.1 Advantages	3
3. Pump Liquid	3
4. Product Key (Fig.1)	4
4.1 Understanding the Model Code	5
5. Control Panel	5
5.1 Pump Setting Indicators	5
6. Performance Drawing	6
7. Fault Finding Chart	7
8. Installation	8
9. Warranty Registration	13



1. General Information

These operating instructions explain the main functions and operation of the pump when installed and ready for use. The installation must be completed by a qualified engineer in accordance with BS 7593:2019

2. Application

Boiler-m8 B-Rated circulation pumps are designed for the circulation of water in heating systems that are installed, commissioned and operated to BS 7593:2019.

This product is suitable for domestic:

- Underfloor heating systems
- One-pipe systems
- Two-pipe systems

The Boiler-m8 RS25-6J universal central heating pump head has been designed to be the ideal replacement head for the popular Grundfos UPS 15-50 15-60 pump, replacing an end-of-life head only rather than having to replace the whole pump body.

This model has a 6 metre head so can easily accommodate the majority of larger domestic systems, and incorporates a 3 speed selector giving 3m, 5m & 6m options.

The Boiler-m8 Universal Pump Head fits a standard Grundfos UPS pump base, allowing easy replacement of the pump head without having to remove the base, perfect for awkward or tight installations.



2.1 Advantages of installing a Boiler-m8 B-Rated Universal Replacement Pump Head

Easy Installation & Quick Commissioning

- Boiler-m8 Universal Pump Head is easy to fit to a UPS base. Take care to isolate any electrical supply before removing the four bolts holding the end-of-life head in position, and refit the Boiler-m8 replacement, before reconnecting the electrical supply and commissioning in compliance with BS7593:2019.

High Degree of Comfort

- Minimum noise from valves and pipework

3. Pump Liquid

Boiler-m8 circulating pumps are designed for heating system liquid treated in compliance with BS 7593:2019

Using the pump to circulate mineral oils, fibrous fluids with particles, or aggressive/explosive liquids will invalidate the product warranty and may cause serious injury.



4. Product Key (Fig.1)



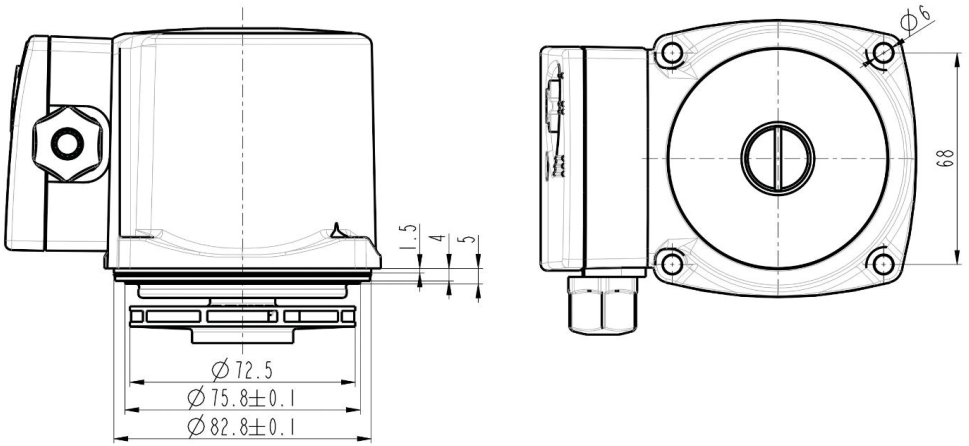
1.	Base/Impeller Housing	4.	Air Vent	
2.	Motor Housing	5.	Control Panel	
3.	Model Rating Label			

BOILER-M8

www.boiler-m8.com
 sales@boiler-m8.com
 0333 305 8210

Boiler-m8®
 Suite 11 Peel House, 30 The Downs,
 Altrincham, Cheshire WA14 2PX

4.1 Understanding the Model Code



5. Control Panel

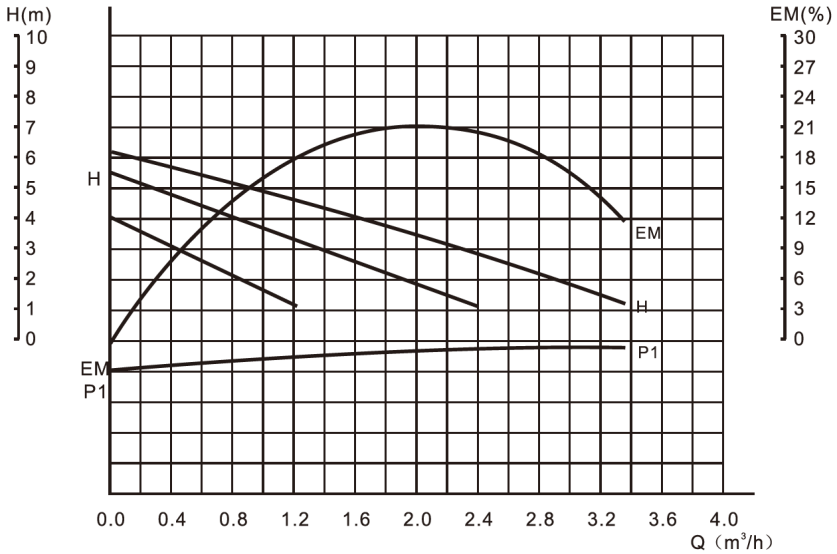
5.1 Pump Setting Indicators

Boiler-m8 B-Rated central heating circulating pumps have 3 speed settings which can be selected with the lever on top of the control box.

The current setting is indicated by the markings on the control box that correspond to the position of the selector.



6. Relation between Pump Setting and Pump Performance



PUMP MODEL	POWER W	MAX.FLOW L/Min	MAX.HEAD M	INLET/OUTLET IN	NW Kg
RS25/6G-130	93/67/46	55/38/22	6/5/3	1 1/2"	2.4

Speed Setting 1

46w - 3m Head

Speed Setting 2

67w - 5m Head

Speed Setting 3

93w - 6m Head



7. Fault Finding Chart

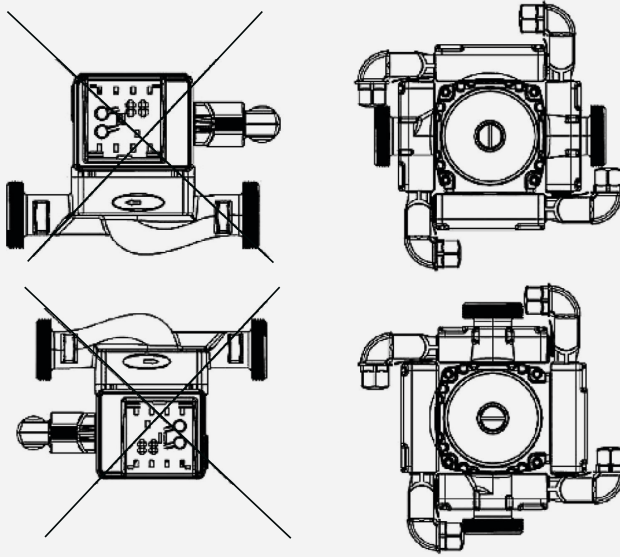


Only a qualified engineer should undertake inspection of the pump. Before removing the cover or starting any work on the pump, you must make sure that the electricity supply has been switched off and that it cannot be accidentally switched on.

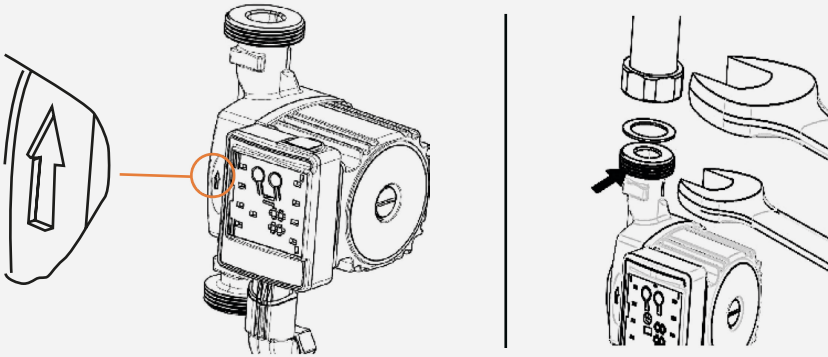
Fault	Control Panel	Cause	Remedy
1. The pump does not run	No power at pump.	a) Fuse in the installation is blown.	Replace the fuse.
		b) The current-operated or voltage-operated circuit breaker has tripped out.	Reset the circuit breaker and check.
		c) The pump is defective.	Replace the pump.
	Power confirmed.	a) Electricity supply failure. May be too low.	Check that the electricity falls within the specified range.
		b) The pump is blocked.	Remove the blockage.
2. Noise in the System	Power is on and speed selector is set.	a) Air in the system.	Vent the system.
		b) The flow is too high.	Reduce the setting.
3. Noise in the Pump.	Power is on and speed selector is set.	a) Air in pump.	Leave the pump to run, it vents itself over time. (increase power to maximum to speed up the elimination of air.)
		b) The system pressure is too low.	Increase the system pressure and check the expansion tank if installed.
4. Insufficient Flow	Power is on and speed selector is set.	a) The pump performance is too low.	Increase the setting.



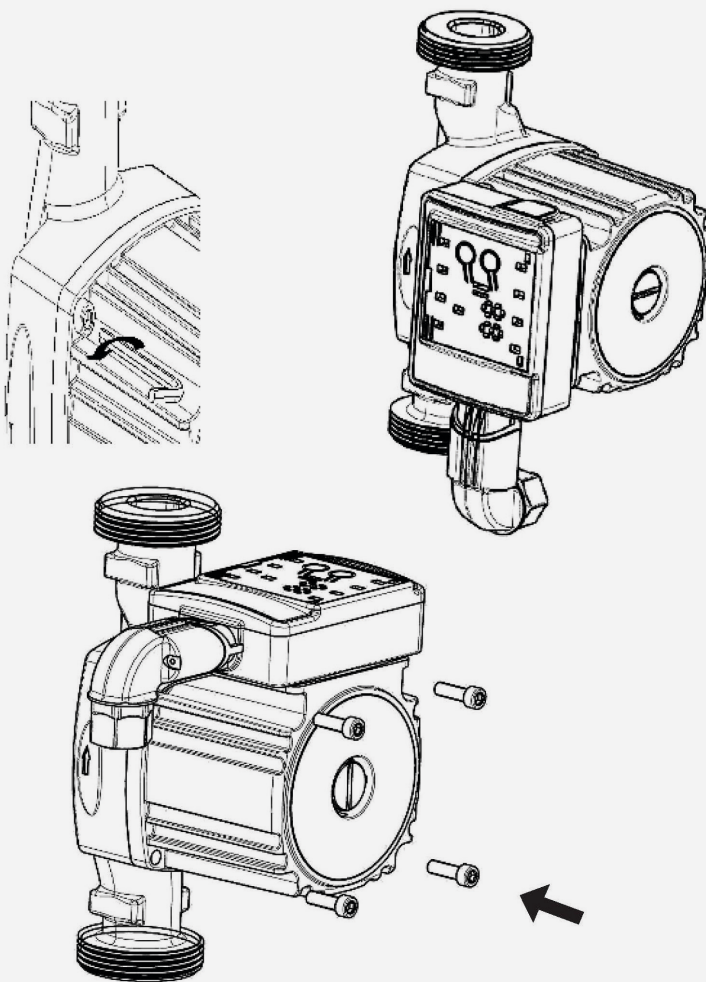
8. Installation



Attention: The pump MUST be installed with the motor shaft in the horizontal position to prevent air from collecting within the pump head.



BOILER-M8

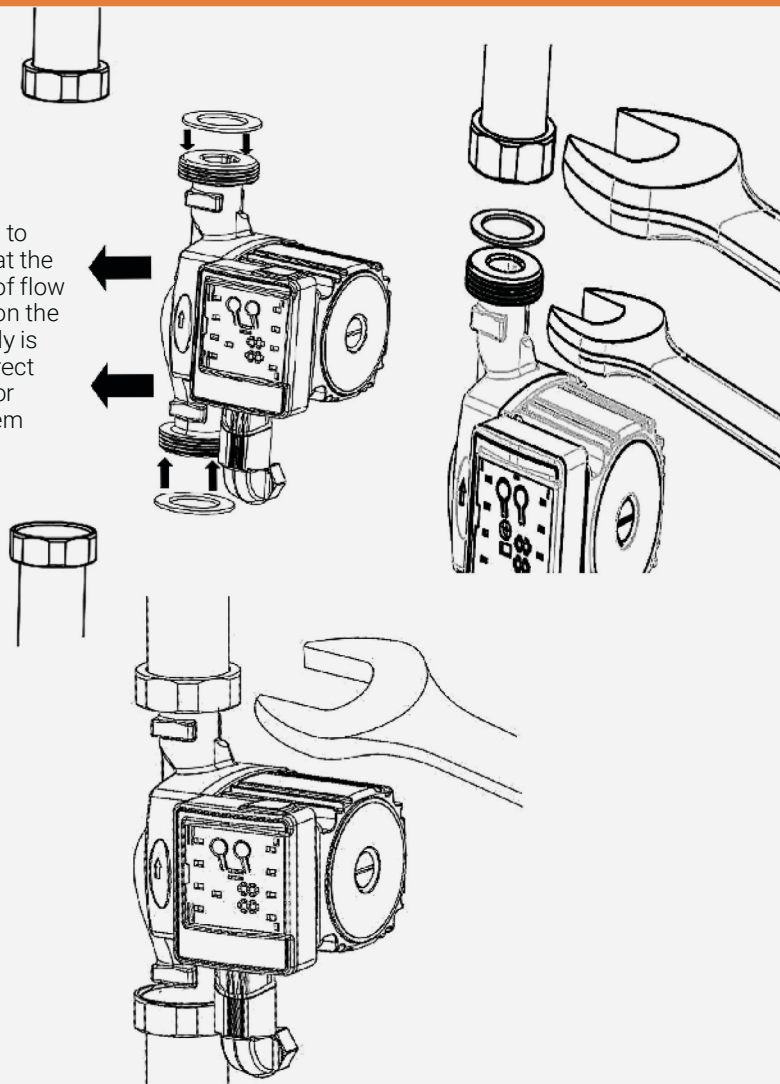



WARNING

The system liquid may be scalding hot and under the high pressure. Drain the system or close the isolating valves on either side of the pump before removing the pump or pump head.

BOILER-M8

Be careful to ensure that the direction of flow indicator on the pump body is in the correct position for your system

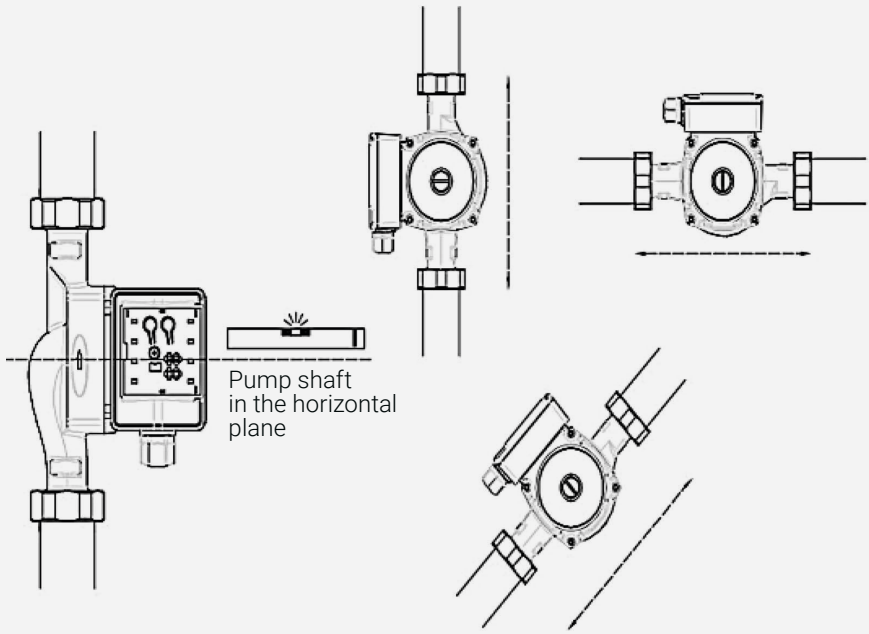


Attention: Fit the two seals between the pump and the pump valves.

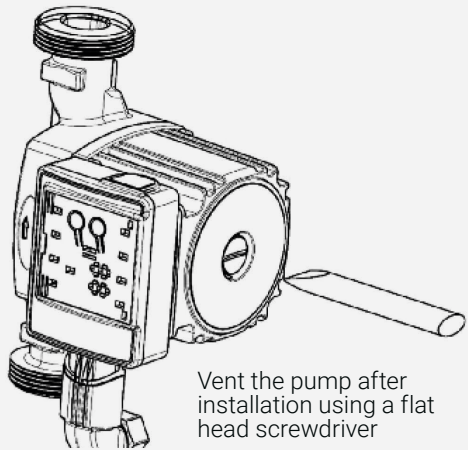
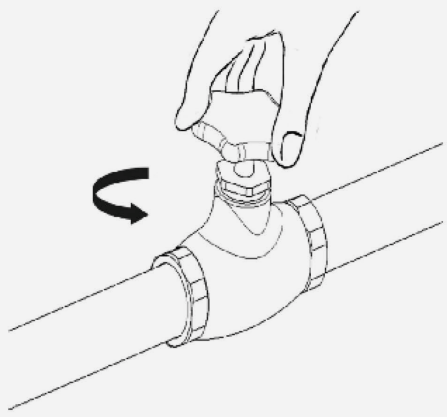
BOILER-M8

www.boiler-m8.com
sales@boiler-m8.com
0333 305 8210

Boiler-m8®
Suite 11 Peel House, 30 The Downs,
Altrincham, Cheshire WA14 2PX

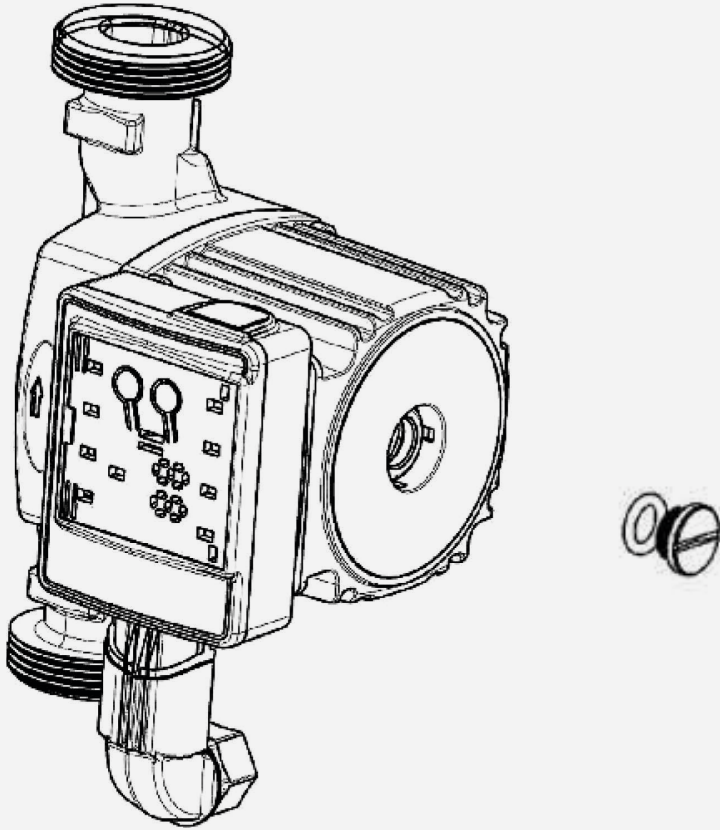


Pump shaft
in the horizontal
plane



Vent the pump after
installation using a flat
head screwdriver





WARNING

Venting the pump, please take care as the liquid may be very hot.

Attention: The pump must not be allowed to run dry.



9. Warranty Registration

Register your warranty at:



Or visit:

<https://boiler-m8.com/warranty-registration>



Try our other products:



Boiler-m8 Defender-2 Magnetic Boiler System Filter 22mm

- High strength magnet
- Built in drain off port with hose connection
- Manufactured from PA66 Polymer
- Brass Diverter and Full Bore Brass Isolating Valves



Boiler-m8 System Health Inhibitor Concentrate 500ml

- Buildcert NSF Benchmark Approved
- WRAs Approved



The New AirMaster™ For Your Heating System

- Full-bore design
- Automatic air separation and venting
- Brass body
- 360° Diverter
- Compression connections



BOILER-M8

A stylized flame logo consisting of three curved shapes in blue, orange, and white, positioned to the right of the main text.

**FOLLOW US ON SOCIAL MEDIA
/BOILERM8**